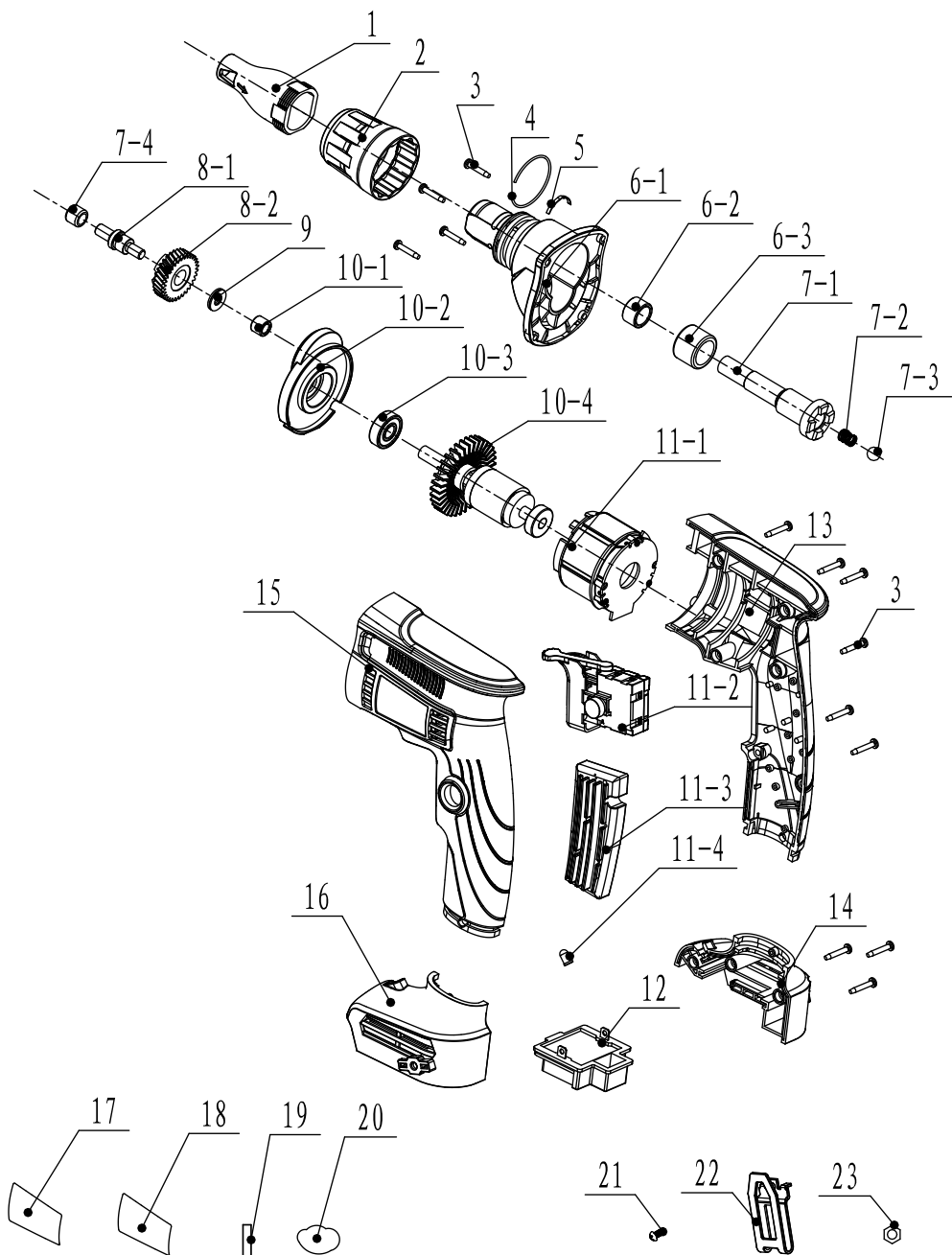


EXPLODED VIEW AND SPARE PARTS LIST



No.	Name		QTY
1	depth adjustment head		1
2	depth adjustment seat		1
3	screw	3×16	13
4	steel cable baffle ring		1
5	Elastic iron		1
6	gear box assembly		1
6-1	gear Box		1
6-2	needle bearing HK1210	HK1210	1
6-3	needle bearing HK1616	HK1616	1
7	Output shaft assembly		1
7-1	Output shaft		1
7-2	reset spring		1
7-3	ball		1
7-4	needle bearing HK0709	HK0709	1
8	big gear assembly		1
8-1	gear shaft		1
8-2	gear shaft		1
9	plane bearing	φ13.8*φ6.2*1.5	1
10	rotor assembly		1
10-1	needle bearing HK0608	HK0608	1
10-2	aluminium block		1
10-3	bearing 608	608RS	1
10-4	rotor	5025 18V W07	1
11	stator	5025 18V W16	1
		JC15-736V DC 20A	1
			1
		ø5	1
12	Battery connect pin		1
13	right housing		1
14	Right chassis pin cover		1

15	left housing		1
16	left chassis pin cover		1
17	label		1
18	label		1
19	heat shrink tubing	$\varphi 4$	
20	grease	ES-A	
21	screw	M4×8	1
22	hook		1
23	screw nut	M4	1